



SOURCE WATER PROTECTION

***Source Protection Planning – Policy Development
GWDA and Homebuilders Meeting
Guelph – September 21***

Presentation Overview

- **Clean Water Act**
- **Lake Erie Source Protection Region**
- **Source Protection Plan**
- **Threats Assessment**
- **Policy Development**
- **Next Steps**

The Clean Water Act

- Passed in 2006 to implement recommendations on source protection in the Walkerton Report
- Protect current and future drinking water sources from contamination and depletion
- One of five layers in a 'multi-barrier' approach



Lake Erie
Watershed Region:
Base Map



Legend:

-  Erie SPP Area
-  Municipal Boundary
-  Lake
-  River



- **Lake Erie Source Protection Region**
 - Kettle Creek
 - Grand River
 - Long Point Region
 - Catfish Creek
- **One plan will be developed for each watershed**
- **Process led by multi-stakeholder Source Protection Committee (SPC)**

Source Protection Plans

- **Source Protection Plans will be science-based**
- **done on a watershed basis**
- **joint effort of municipalities and the SPC representing the people of a watershed**
- **facilitated by conservation authorities**

Source Protection Plan

- **The Plan will contain policies and programs to:**
 - manage significant threats so they are no longer significant
 - prevent new significant threats from being created
- **Clean Water Act identifies a variety of tools that can be used to manage threats**

Source Protection Plan Process



Steps in the process

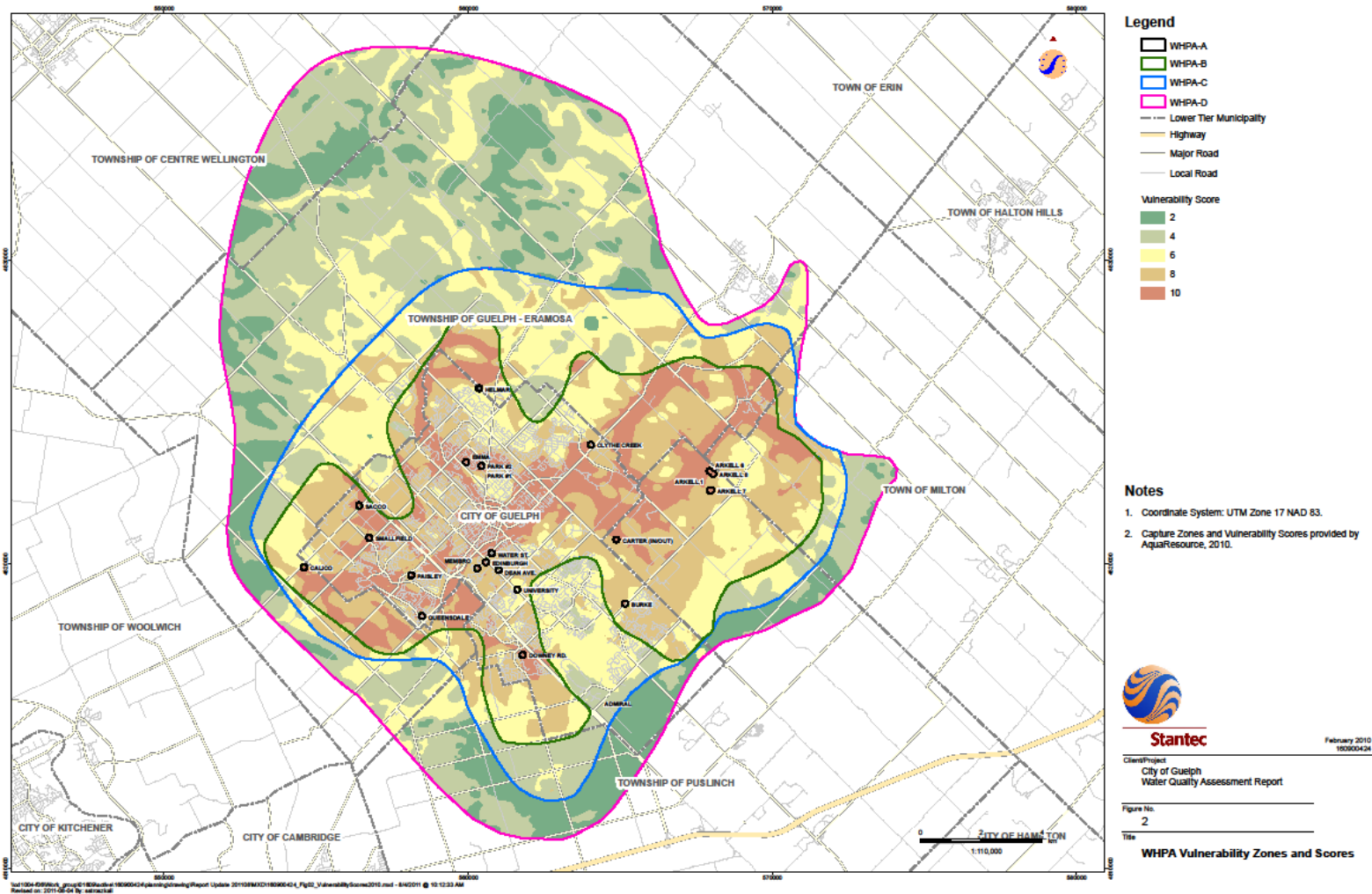
	2005	2006	2007	2008	2009	2010	2011	2012
Watershed Studies	■							
Municipal Technical Studies		■						
Terms of Reference				■				
Assessment Report					■			
Source Protection Plans						■		

- **Characterization Reports: Complete**
- **Terms of Reference: Complete**
- **Technical studies: Complete**
- **Assessment Reports: Waiting for MOE Approval**
- **Source Protection Plans: Due by August 2012**

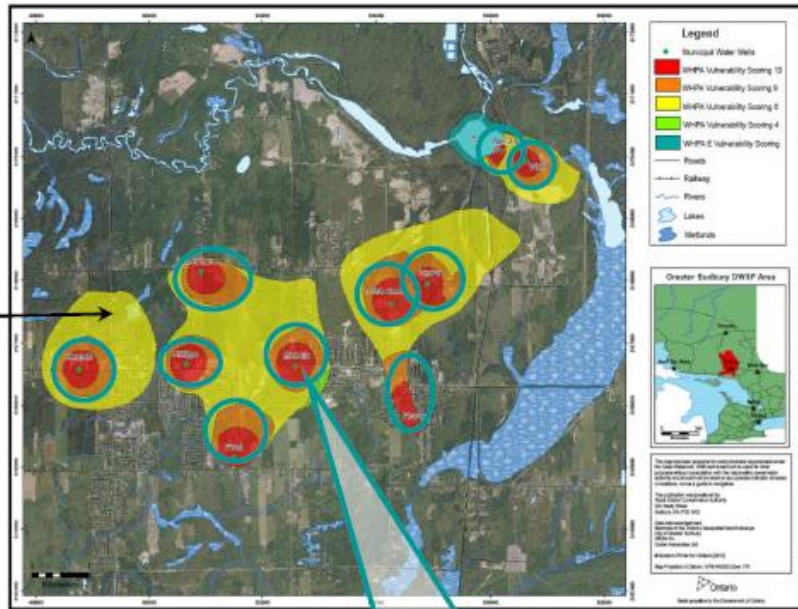
The Assessment Report

- Describes watershed characteristics
- Identifies:
 - *vulnerable areas* related to drinking water sources
 - *threats* to water quality and quantity
- Ranks potential threats:
 - *low, moderate or significant*

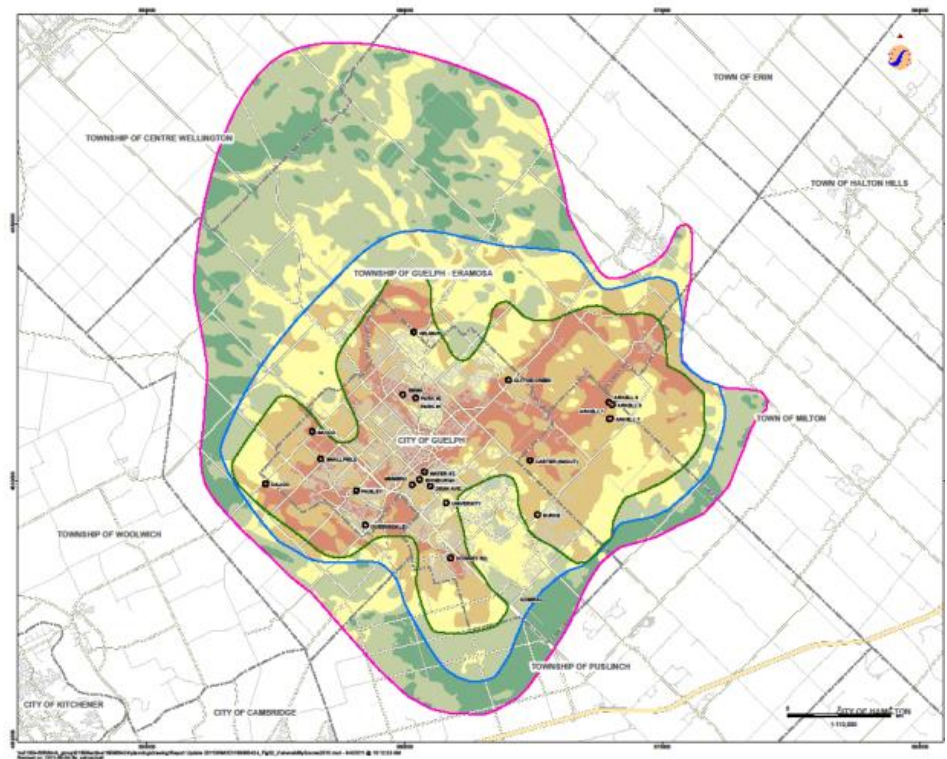
City of Guelph - Vulnerability Zones



Guelph's Unique Vulnerability



Areas where a threat could be significant



Prescribed Drinking Water Threats

1 – **waste** disposal

2 – **sewage**

Agriculture

3 – application of ASM
4 – storage of ASM
5 – management of ASM

6 – application of NASM
7 – handling and storage of NASM

8 – application of commercial fertilizer
9 – handling and storage of commercial fertilizer

10 – application of pesticide
11 – handling and storage of pesticide

21 – livestock grazing

12 – application of **road salt**
13 – handling and storage of **road salt**

14 – storage of **snow**

Industrial

15 – handling and storage of **fuel**

16 – handling and storage of **DNAPL**

17 – handling and storage of an **organic solvent**

18 – chemicals used in the de-icing of aircraft

Water Quantity

19 – consumptive water taking

20 – activity that reduces the recharge of an aquifer

Clean Water Act (General Reg. 287/07)

Clean Water Act

22. (1) Every source protection plan shall set out the following as objectives of the plan:

1. To protect existing and future drinking water sources in the source protection area.

2. To ensure that, for every area identified in an assessment report as an area where an activity is or would be a significant drinking water threat,

- I. The activity never becomes a significant drinking water threat, or
- II. If the activity is occurring when the source protection plan takes effect, the activity ceases to be a significant drinking water threat. O. Reg. 246/10, s. 12.

(2) If a source protection plan sets out policies relating to conditions resulting from past activities, the plan shall set out that an objective of the plan is to ensure that for every area identified in the assessment report as an area where a condition that results from a past activity is a significant drinking water threat, the condition ceases to be a significant drinking water threat. O. Reg. 246/10, s. 12.

Source Protection Tools

- **Part IV S. 57 Prohibition**
 - only to be used when no other tool available or adequate
- **Part IV S. 58 Risk Management Plans**
 - negotiated by municipality and landowner for specific property
- **Part IV S. 59 Restricted Land Uses**
 - processing tool (Section 57, 58 and Planning Act), prescreening of planning applications, building permits
- **Prescribed Instruments**
 - Pesticide Act permits, Nutrient Management Strategies, Certificates of Approval
- **Planning Approaches**
 - (Official Plan, Zoning, Site Plan Control)
- **Education and Outreach**
 - information on how to manage significant threats
- **Incentive Programs**
 - grants to landowners to address significant threats
- **Other**
 - stewardship programs, pilot projects, Municipal Act

Policy Development

- **Discussion Papers were prepared by Lake Erie Source Protection Region**
 - evaluate policy and program options
- **City of Guelph has taken the lead for policy development as it relates to the City's significant drinking water threats**
- **City staff are currently evaluating policy and program options**
- **Retained Stantec and Ruth Victor & Associates to prepare a Guelph Specific Discussion Paper, identify Policy Choices and Draft Policies**

Policy Development

- **City of Guelph to conduct pre-consultation with:** stakeholders, neighboring municipalities, ministry staff, public
- **City to advise SPC of preferred options and policy:**
 - for existing threats
 - to prevent new threats from developing
- **SPC to consider Guelph's policy choices through the development of the Source Protection Plan**

Guelph's Policy Considerations

- **The protection of the City's drinking water**
- **Fairness to landowners**
- **Impact to citizens**
- **Constraint on economic development**
- **Ease of implementation**
- **Workload and financial impacts to City**

Example Policy- Snow Storage

Range of Policy Options for Snow Storage:

- Prohibit snow storage facilities in significant threat areas
- Require Risk Management Plans
- Land use planning - require site plan control to include best management approaches including provision of designated snow storage areas
- Incentive Programs- Provide subsidies for implementation of best management practices for snow storage on private property.
- Specify Action- Require municipal road authorities and encourage Ministry Transportation of Ontario (MTO) and private operators to prepare or amend winter maintenance/salt management and snow storage plans.

Example Policy – Septic Systems

Range of options for septic systems:

- Mandatory inspection (required under Building Code)
- Education and outreach- program to help landowners learn how to care for septic systems
- Incentive programs - grants to upgrade or replace failing or substandard systems

Example Policy – Sewage Treatment

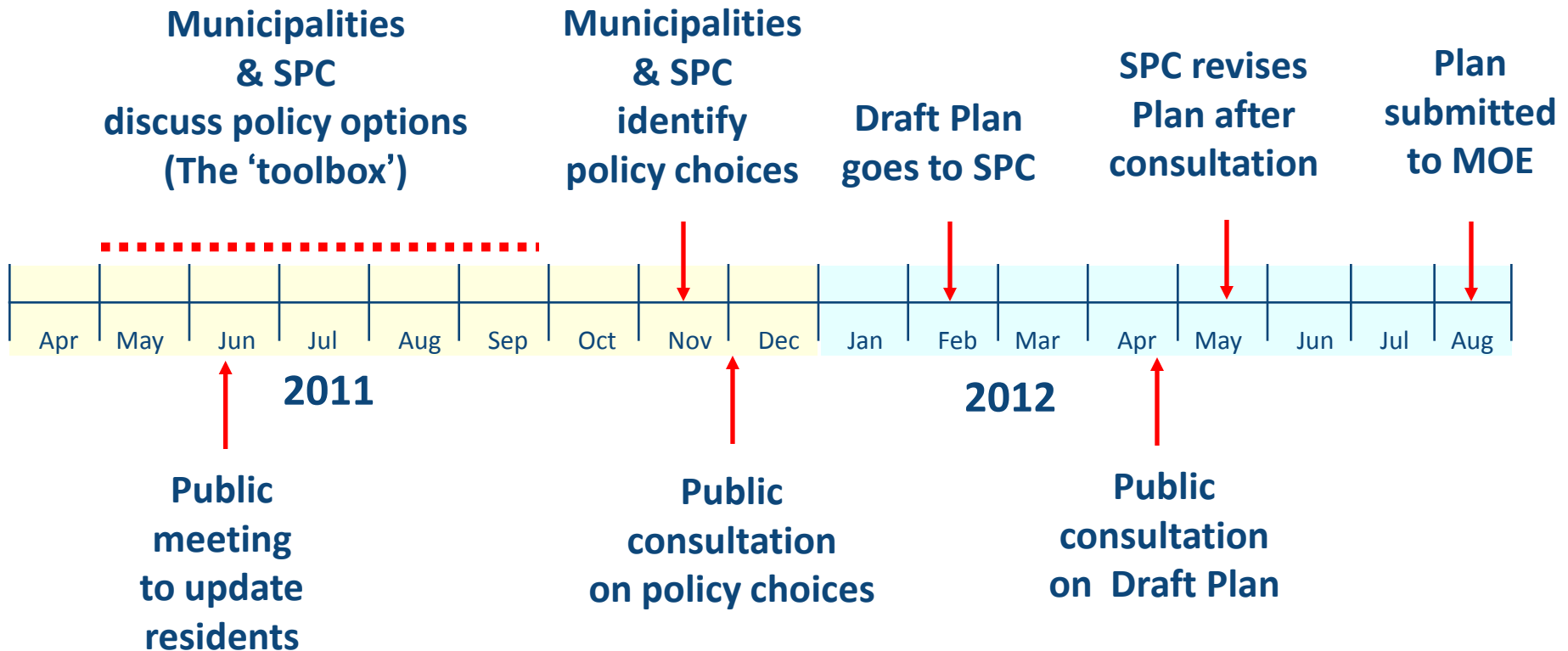
Range of options for sewage treatment:

- Prescribed Instrument - Require the Province to review Certificates of Approval and apply additional conditions to address source protection.
- Education and Outreach - Inform the owner of best practices and provide options for better management.

Next Steps

- Draft Guelph specific policies to be released – October, 2011.
- Public Open House – November, 2011
- Requesting comments on draft policies - November, 2011
- Will be presenting revised policies to Council in December 2011 for consideration by the SPC
- Formal consultation on the Source Protection Plan will begin in the Spring of 2012

Timeline for Plan Development



What's New

[News releases
and site updates](#)

Clean Water Act

[CWA information](#)

[Tables of Drinking
Water Threats](#)

[What are
Assessment Reports?](#)

Watersheds

[Kettle Creek](#)

[Catfish Creek](#)

[Long Point Region](#)

[Grand River](#)

Source Protection Committee

[Lake Erie](#)

[Source Protection Region](#)

[Source Protection
Committee](#)

Stewardship Fund



Protecting our drinking water

Protecting the sources of our municipal drinking water is an important step toward ensuring that there is enough safe, clean drinking water for all.

The **Clean Water Act** has been passed by the Ontario legislature to protect municipal drinking water sources throughout Ontario.

Update

Public meetings scheduled: Meetings are scheduled in each of the four watersheds of the Lake Erie Region to update residents on the source protection planning process. [See the schedule.](#)

Questions/Comments

Thank you